

Connect[®]

Workshop Consumables

www.connect-consumables.co.uk

DEALER
**NO
MORE!**

NEW LINES 2021
Booklet

**DEALER
NO
MORE!**

**BUY DIRECT FROM YOUR LOCAL CONNECT
DISTRIBUTOR TO AVOID MAIN DEALER PRICES!**

**OVER 800 TRIM CLIP OPTIONS
ACROSS THE RANGE**

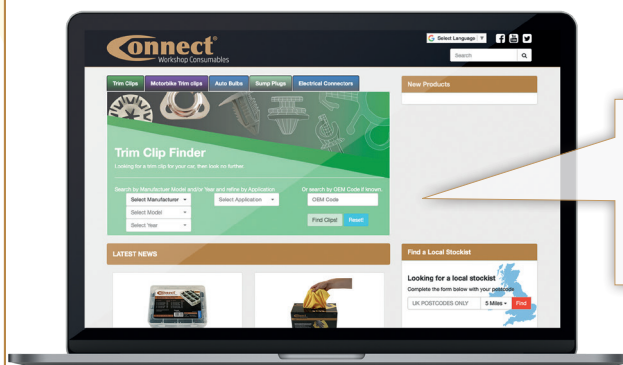
► 1,500 OEM references listed ► More than 5,500 vehicle applications

STAND

RETAIL TOWER

**496 PRODUCTS - 121 Popular Trim Clips
12 Laser Trim Clip Tools**

**EASILY FIND THE CORRECT TRIM CLIP
WITH OUR ONLINE TRIM CLIP FINDER**



**Over 1,500 OEM codes and 5,500 vehicle
and motorbike applications to search from.**



Scan here to find
out more

LASER[®]

Connect[®]
Workshop Consumables



Tel: 01926 815000 | Email: sales@toolconnection.co.uk
www.connect-consumables.co.uk

NEW Mechanics Gloves



Thermal Mechanics Gloves

Thermal gloves with cutting protection. Stable in performance up to -20°C.



IN SIZES
M, L, XL & XXL

1 PAIR
PER PACK



Cut Resistant Mechanics Gloves

Professional cut resistant gloves for the professional user.



IN SIZES
M, L, XL & XXL

3 PAIRS
PER PACK

Thermal Mechanics Gloves - 1 Pair

- 13 gauge terry brushed acrylic liner with fully dipped smooth latex palm with sandy finished latex coated glove.
- Conforms to - EN388 : 2016, EN511 : 2006, EN407 : 2004.



Mechanics Cut Resistant Gloves - 3 Pairs

- Silicone free.
- Material: 15 gauge nylon plus spandex liner with SKINTEK coating.
- Conforms to EN388 : 2016 Approved.



Size	Part No.
Medium (8)	35370
Large (9)	35371
Extra Large (10)	35372
Extra Extra Large (11)	35373

Size	Part No.
Medium (8)	35374
Large (9)	35375
Extra Large (10)	35376
Extra Extra Large (11)	35377

NEW high quality foam pad range for the professional user

Full and comprehensive range of foam pads which have been professionally designed for the restoration of automobile painted surfaces and daily maintenance.

Manufactured of high quality polyester sponge which has the advantage of excellent tensile strength & durability that provides additional service life which is several times longer than that of ordinary sponges. The range includes 150mm M14 threaded pads, in both 'mushroom' and 'straight edge' styles, 150mm Velcro pads in Flat, Corrugated, and Bevel Edge formats, and a selection of 78mm Velcro backed corrugated pads. Appropriate backing pads are also included in the range.



Foam Head Ball Series Pads - 1pc

- Ball series type foam with screw hole backing pad
- Mushroom shape.
- 150mm x 45mm.



Description	Colour	Part No.
Removes severe oxidation, scratches and swirls.	White	32282
Polishing and removes swirls.	Orange	32283
Removes light swirls, finishes the polishing process to be used on soft paint for polishing work.	Black	32284



Traditional Foam Heads - 1pc

- Traditional ball series foam with copper headed screw hole backing plate.
- 150mm x 50mm.
- Thread M14.

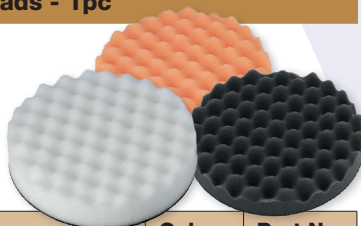


Description	Colour	Part No.
Removes severe oxidation, scratches and swirls.	White	32285
Polishing and removes swirls.	Orange	32286
Removes light swirls, finishes the polishing process to be used on soft paint for polishing work.	Black	32287

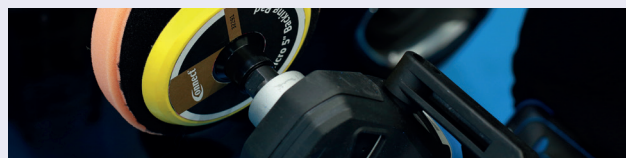


Corrugated Velcro Pads - 1pc

- Corrugated flat velcro pad.
- 150mm x 30mm x 120mm velcro area.



Description	Colour	Part No.
Removes severe oxidation, scratches and swirls.	White	32273
Polishing and removes swirls.	Orange	32274
Removes light swirls, finishes the polishing process to be used on soft paint for polishing work.	Black	32275



Flat Velcro Pads - 1pc

- Flat velcro pad.
- 150mm x 32mm x 130mm velcro area.

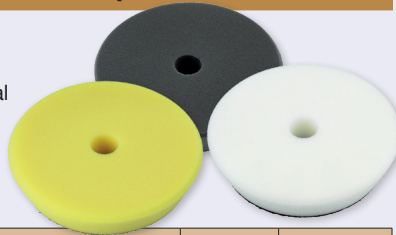


Description	Colour	Part No.
Removes severe oxidation, scratches and swirls.	White	32270
Polishing and removes swirls.	Orange	32271
Removes light swirls, finishes the polishing process to be used on soft paint for polishing work.	Black	32272



Bevel Edge Velcro Pads - 1pc

- 150mm x 30mm x 130mm velcro area.
- To be used with a dual action sander.



Description	Colour	Part No.
Removes severe oxidation, scratches and swirls.	White	32279
Polishing and removes swirls.	Yellow	32280
Removes light swirls, finishes the polishing process to be used on soft paint for polishing work.	Black	32281



Corrugated Velcro Pads - 3pc

- 78mm x 30mm velcro area.
- Foam pads to be used on air sanders.



Description	Colour	Part No.
Removes severe oxidation, scratches and swirls.	White	32276
Polishing and removes swirls.	Orange	32277
Removes light swirls, finishes the polishing process to be used on soft paint for polishing work.	Black	32278



Velcro Backing Pads - 1pc

- Professional velcro backing pads.
- Backing pad to be used with Part Nos. 32276 (cutting), 32277 (polishing) & 32278 (finishing) pads.
- M14 x 2 thread

Size	Part No.
3"	32290
5"	32291



Woollen Polishing Pads - 1pc

- Outside diameter: 155mm. Velcro diameter: 125mm.
- For professional buffing.
- 100% wool.



Description	Colour	Part No.
Concave woollen thick polishing pad.	White	32288
Concave woollen fine polishing pad.	Yellow	32289

Abracs Quick Lock Bristle Brushes - 5pc

- Fast running ceramic grit discs are ideal for efficiently, cleaning or stripping many substances from metal surfaces without damaging the work-piece.
- Flexible brush.
- Manufactured with ceramic grain for maximum performance and long life.
- To be used with Connect Part No. 32110 50mm backing pad.
- To be used on materials such as steel & aluminium.
- For cleaning, stripping, blending & deburring.

Size	Colour	Part No.
50mm x P50	Green	32198
50mm x P80	Yellow	32199



R Clips

- Material - carbon steel.
- Strong, durable and corrosion resistant.
- Applications include - securing clevis pins, cotter pins and other pivot pins.



Size	Quantity	Part No.
Wire diameter 2mm x working length 43mm	50pc	34177
Wire diameter 3mm x working length 54mm	25pc	34178
Wire diameter 4mm x working length 75mm	20pc	34179
Wire diameter 5mm x working length 105mm	10pc	34180
Wire diameter 6mm x working length 115mm	10pc	34181

Linch Pin

Retaining pin.

- Used as an alternative solution in place of an R clip.
- Mild steel.



Size	Quantity	Part No.
4.5mm (pin width) x 40mm (pin length)	10pc	34220
6mm (pin width) x 45mm (pin length)	10pc	34221
8mm (pin width) x 45mm (pin length)	10pc	34222
10mm (pin width) x 45mm (pin length)	10pc	34223
9.5mm (pin width) x 70mm (pin length)	10pc	34224
11mm (pin width) x 50mm (pin length)	10pc	34225

Assorted R Clips - 75pc

31899

- Contains: 2mm, 3mm, 4mm, 5mm, 6mm.
- Material - carbon steel.
- Strong, durable and corrosion resistant.
- Applications include - securing clevis pins, cotter pins and other pivot pins.



Assorted Nylon P Clips - 160pc

35008

- Contains: 4.8mm, 6.0mm, 9.0mm, 12mm, 19mm.
- Material - UL approved nylon 66 94V-2.
- Screw-fixing type.
- Nylon polyamide 6.6.



Assorted Strip Fuses 30-200Amp - 30pc

37644

Popular non-housed ring type strip fuses. Used on Volkswagen, Audi, Seat, Skoda & Ford.

- Voltage rating 36 VDC.
- Operating temp. range: -40°C to 125°C.
- Material - Zinc Alloy.
- Contains: 30, 40, 50, 60, 70, 80, 110, 150, 175 & 200 amp fuses - 3 pieces of each.
- RoHS compliant.

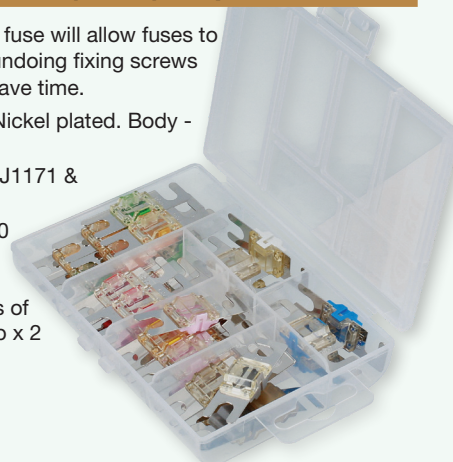


Assorted Midi Fuses (Nickel) - 28pc

37645

This new type of Midi fuse will allow fuses to be changed without undoing fixing screws completely so it will save time.

- Material - Copper Nickel plated. Body - thermal plastic.
- Complies with SAEJ1171 & ISO8820-5.
- Contains: 30, 40, 50 amp x 4 pieces of each; 60, 70, 80, 100 amp x 3 pieces of each; 125, 150 amp x 2 pieces of each.



Assorted Renault Wiring Harness Kit - 12pc 37616

Connectors come complete with 200mm cable.

- Temperature sensor connector (37578) x 2
- Oxygen sensor connector (37579) x 2
- Heater resistor connector (37580) x 2
- Heater resistor connector (37581) x 2
- Crankshaft sensor connector (37582) x 2
- Fuel pump connector (37583) x 2



TOP UP
PACK AVAILABLE

Assorted Citroën | Peugeot Connector Kit - 24pc 37617

Complete with related terminals & seals to fit each connector.

- 2 x temperature sensor connectors (37584)
- 2 x ignition coil connectors (37586)
- 2 x fog lamp connectors (37587)
- 2 x fuel injector connectors (37588)
- 2 x MAP sensor connectors (37589)
- 2 x multi-purpose 2 pin connectors (37592)
- 2 x multi-purpose 3 pin connectors (37593)
- 2 x multi-purpose 4 pin connectors (37594)
- 2 x multi-purpose 6 pin connectors (37595)
- 2 x oxygen sensor connectors (37597)
- 2 x oxygen sensor connectors (37598)
- 2 x air pressure sensor connectors (37599).



TOP UP
PACK AVAILABLE

Assorted Volvo Connector Kit - 24pc 37618

Complete with related terminals & seals to fit each connector.

- Multi purpose 2 pin connector (37601) x 2
- Multi purpose 2 pin connector (37603) x 2
- Multi purpose 2 pin connector (37605) x 2
- Multi purpose 2 pin connector (37606) x 2
- Camshaft sensor connector (37607) x 2
- Camshaft sensor connector (37608) x 2
- Camshaft sensor connector (37430) x 2
- Fuel pressure connector (37609) x 2
- Multi purpose socket housing (37610) x 2
- Headlight H7 bulb connector (37612) x 2
- Air flow sensor connector (37614) x 2
- Power steering pump connector (37615) x 2.

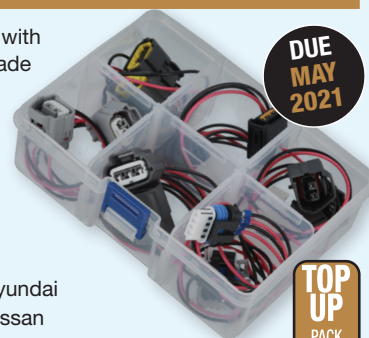


TOP UP
PACK AVAILABLE

Assorted Wiring Ignition Coil Harness Connector Kit - 12pc 37664

Each connector is supplied with 20cm of cable in a ready made mini harness.

- 3 pin connector to suit Nissan
- 3 pin connector to suit Subaru Impreza
- 2 pin connector to suit Hyundai
- 2 pin connector to suit Hyundai
- 3 pin connector to suit Nissan
- 4 pin connector to suit GM trucks



DUE MAY 2021

TOP UP
PACK AVAILABLE

Assorted Wiring Ignition Coil Harness Connector Kit - 12pc 37665

Each connector is supplied with 20cm of cable in a ready made mini harness.

- 4 pin connector to suit Toyota
- 2 pin connector to suit Toyota
- 4 pin connector to suit Toyota
- 3 pin connector to suit Honda
- 3 pin connector to suit Honda
- 2 pin connector to suit Toyota



DUE MAY 2021

TOP UP
PACK AVAILABLE

Assorted Fog Lamp Harness Connector Kit - 24pc 37666

Each connector is supplied with 20cm of cable in a ready made mini harness.

- H11/H8 female fog lamp connector
- H9 female fog lamp connector
- Heavy duty fog lamp connector
- HB4 9006 fog lamp connector
- 9006 fog lamp connector
- 9005 fog lamp connector



DUE MAY 2021

TOP UP
PACK AVAILABLE

Assorted Boxes



Assorted Popular Common Rail Connectors - Delphi | 24pc

34078

Popular on VAG, Mercedes-Benz, PSA, Ford, Fiat and Euro 6 engines.

- 8 different connectors - 5 x one way connectors & 3 x two way connectors.



Assorted Popular Common Rail Connectors - Bosch | 35pc

34079

Popular on VW, BMW, PSA, Renault, Fiat, Dacia, Alfa Romeo.

- 7 different connectors - 3 x one way connectors & 4 x two way connectors.



Assorted Popular Common Rail Connectors - Bosch | 30pc

34080

Popular on Ford TDCi engines, PSA, Volvo, Alfa Romeo 1.6 JTDM, Fiat 1.3 & 1.6 JTDM engines, Lancia 1.3 & 1.6 JTDM engines,

- 6 different connectors - 3 x one way connectors & 3 x two way connectors.



Assorted Trim Clips - Renault Clio 195pc

35984

Assortment contains 12 different clips including: trim locking nuts, button clips, fir tree fixings, panel clips, screw rivets, push rivets.



Assorted Trim Clips - Ford Focus 231pc

35985

Assortment contains 12 different clips including: trim locking nuts, push clips, panel clips, screw rivets, metal fixings.



Assorted Trim Clips - Ford Fiesta 273pc

35986

Assortment contains 12 different clips including: trim locking nuts, panel clips, push retainers, button clips.



Assorted Trim Clips - Skoda Octavia 420pc

35987

Assortment contains 12 different clips including: trim locking nuts, moulding clips, weatherstrip clips, panel clips, metal fixings, drive rivets.



Assorted Trim Clips - Skoda Fabia 420pc

35988

Assortment contains 12 different clips including: trim locking nuts, fir tree fixings, weatherstrip clip, drive rivets, moulding clip & panel clip.



Assorted Boxes



Assorted Trim Clips - VW Tiguan 300pc

35989

Assortment contains 12 different clips including: trim locking nuts, drive rivets, screw rivets, moulding clips, metal fixings.



TOP
UP
PACK
AVAILABLE

Assorted Trim Clips - VW Passat 240pc

35990

Assortment contains 12 different clips including: fir tree fixings, panel clips, screw rivets, moulding clips, push retainers.



TOP
UP
PACK
AVAILABLE

Assorted Trim Clips - VW Polo 381pc

35991

Assortment contains 12 different clips including: fir tree fixings, panel clips, screw rivets, moulding clips, push retainers, weatherstrip & button clips.



TOP
UP
PACK
AVAILABLE

Assorted Trim Clips - VW Golf 251pc

35992

Assortment contains 12 different clips including: fir tree fixings, panel clips, screw rivets, moulding clips, push retainers & button clips.



TOP
UP
PACK
AVAILABLE

Assorted Metal Body Screw Trim Fasteners | 100pc

35993

Heavy duty body fixings, various applications.

- Kit covers Ford, Vauxhall/Opel & Chrysler applications.



TOP
UP
PACK
AVAILABLE

Assorted Metal Screw Trim Fasteners 135pc

35994

Heavy duty body trim clip fasteners.

Kit covers Ford, Vauxhall/Opel & VAG applications.



TOP
UP
PACK
AVAILABLE

Assorted Metal Trim Nuts & U Nuts 245pc

35995

Comprehensive range of U nut type body fixings.

- Kit covers Ford, BMW, Mercedes-Benz, VAG & many more applications.



TOP
UP
PACK
AVAILABLE

Assorted Metal Trim Rivets 150pc

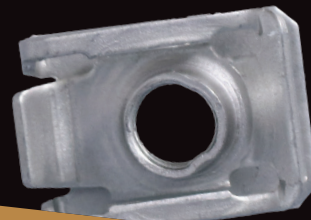
35996

Comprehensive range of metal trim rivets.

- Kit includes items to cover Ford, Vauxhall/Opel, Mercedes-Benz, Nissan, Mazda & Chrysler.



TOP
UP
PACK
AVAILABLE



Chrysler		
H 10.8 - L 29.7 - WF 15.8 - Ø 6mm		
Replacement OE	Pack Qty	Part No.
6025329	50pc	36424



Ford		
H 9.8 - L 38.4 - WF 22.4 - Ø 8mm		
Replacement OE	Pack Qty	Part No.
N606690S2	50pc	36429



GM, Opel, Vauxhall		
H 12.5 - L 30.8 - WF 22.3 - Ø 8mm		
Replacement OE	Pack Qty	Part No.
11501188	50pc	36427



GM, Opel, Vauxhall		
H 13 - L 35 - WF 24 - Ø 8mm		
Replacement OE	Pack Qty	Part No.
11503668	50pc	36423



Toyota		
H 12.7 - L 30.9 - WF 22.4 - Ø 8mm		
Replacement OE	Pack Qty	Part No.
90119-08763, 90119-08B45, 90119-08702	50pc	36422



Ford		
H 12.5 - L 32.9 - WF 22.4 - Ø 8mm		
Replacement OE	Pack Qty	Part No.
384931S36	50pc	36425



Ford		
H 12.6 - L 33 - WF 20.5 - Ø 8mm		
Replacement OE	Pack Qty	Part No.
N605920-S2	50pc	36426



Opel, GM & Vauxhall		
H 12.9 - L 31.4 - WF 16.4 - Ø 8mm		
Replacement OE	Pack Qty	Part No.
11503632	50pc	36430



Universal		
H 12.5 - L 26.5 - WF 16.3 - Ø 8mm		
Replacement OE	Pack Qty	Part No.
/	50pc	36431



Universal		
H 12.5 - L 31.7 - WF 16.3 - Ø 8mm		
Replacement OE	Pack Qty	Part No.
/	50pc	36428



Universal		
H 12.5 - L 25.7 - WF 16.4 - Ø 8mm		
Replacement OE	Pack Qty	Part No.
/	50pc	36432



Audi		
L 26.3 - WF 19.8 - use a TX30 bit		
Replacement OE	Pack Qty	Part No.
8K0805399A	50pc	36433

List order: Type - Manufacturer - Replacement OE Number

Trim Clips



connect®
Workshop Consumables



Mercedes-Benz

H 12.8 - L 35.1 - WF 24.5 - Ø 8mm

Replacement OE	Pack Qty	Part No.
N000000001410 & A0049941845	50pc	36437



Ford

L 26.9 - W 13.5 - D 5 - ID 3.2mm

Replacement OE	Pack Qty	Part No.
381863S2, 11504531 & 9440178	50pc	36438



Ford

L 21.5 - W 14.1 - D 4.5 - ID 3mm

Replacement OE	Pack Qty	Part No.
9431530, 9424837 & 381818S2	50pc	36439



GM, Opel

L 21.6 - W 16.2 - D 5.1 - ID 3.9mm

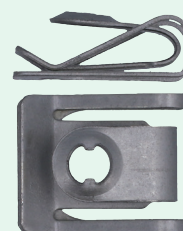
Replacement OE	Pack Qty	Part No.
2072082 & 11090592	50pc	36440



Renault, Opel & GM, Saab

**L 20.3 - W 16.3 - D - 4.5
ID 8.9 x 7.3mm**

Replacement OE	Pack Qty	Part No.
7703080096, 856563, 92152112	50pc	36434



BMW

L 23.7 - W 19 - D 8.2 - ID 5.2mm

Replacement OE	Pack Qty	Part No.
07146981767	50pc	36441



Ford

L 18.8 - W 14.6 - D 4.8 - ID 3.7mm

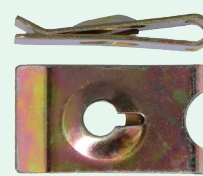
Replacement OE	Pack Qty	Part No.
1069428 & W715835-S300	50pc	36442



Universal

L 25 - W 16 - D 4.2 - ID 5mm

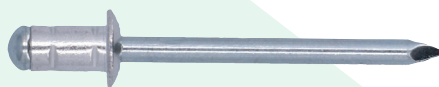
Replacement OE	Pack Qty	Part No.
/	50pc	36435



Universal

L 26 - W 14.6 - D 4.3 - ID 4.2mm

Replacement OE	Pack Qty	Part No.
/	50pc	36436



Fiat, Mercedes-Benz

L 57.3 - FW 10.8 - Ø 6.3mm

Replacement OE	Pack Qty	Part No.
51750705, A0049902897	50pc	36447



Ford

L 40.1 - FW 9.3 - Ø 3mm

Replacement OE	Pack Qty	Part No.
N805759S100 & 6059465	50pc	36444



Ford

L 56.8 - FW 10 - Ø 4.8mm

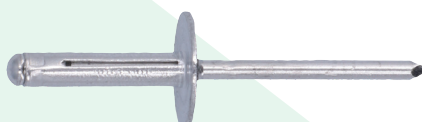
Replacement OE	Pack Qty	Part No.
7000412	50pc	36446



GM & Opel, Ford, Chrysler

L 53.2 - FW 13.2 - Ø 6.3mm

Replacement OE	Pack Qty	Part No.
9436175 & 13438213, 385189-S100, 6031115	50pc	36443



GM

L 56.4 - FW 15.5 - Ø 4.8mm

Replacement OE	Pack Qty	Part No.
	50pc	36445



Ford

W 21.6 - T 2.3mm

Replacement OE	Pack Qty	Part No.
1462015 & W703505S442	50pc	36481

List order: Type - Manufacturer - Replacement OE Number

Metal Fasteners - Nuts & Rivets

Trim Clips

connect
Workshop Consumables



**DEALER
NO
MORE!**



Ford

H 19.8 - L 16.2 - Ø 6.6mm

Replacement OE	Pack Qty	Part No.
6725950 & 1629279	50pc	36479

VW

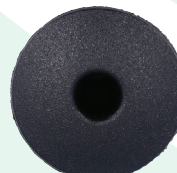
H 19.8 - L 9.4 - Ø 9mm

Replacement OE	Pack Qty	Part No.
N90533301	50pc	36450

Renault

H 19.8 - L 16.2 - Ø 6.6mm

Replacement OE	Pack Qty	Part No.
7703077117	50pc	36477



Renault

H 16.0 - L 21.4 - Ø 9.2mm

Replacement OE	Pack Qty	Part No.
7703077356	50pc	36473

Skoda

H 11.8 x 10 - L 23 - Ø 7.7mm

Replacement OE	Pack Qty	Part No.
N90681301	50pc	36471

VW

H 23.4 - L 19 - Ø 11mm

Replacement OE	Pack Qty	Part No.
1H086719901C	50pc	36449



VW

H 20 - L 18.2 - Ø 7.8mm

Replacement OE	Pack Qty	Part No.
N90911301	50pc	36460

Peugeot & Citroën, Renault, VAG

H 17.0 - L 13.7 - Ø 12.0mm

Replacement OE	Pack Qty	Part No.
6991Y8, 7703077469, 5J0867276	50pc	36482

Renault

H 8 - L 16.1 - Ø 10.6mm

Replacement OE	Pack Qty	Part No.
7701061797	50pc	36475



Renault

H 15.4 - L 15.4 - Ø 14.2mm

Replacement OE	Pack Qty	Part No.
7703077434	50pc	36457

Renault

H 30 - L 16.7 - Ø 9mm

Replacement OE	Pack Qty	Part No.
7703081054	50pc	36472

Skoda

H 13 - L 16.4 - Ø 12.3mm

Replacement OE	Pack Qty	Part No.
5J0867276	50pc	36469

Button Clips, Fir Tree Fixings & Panel Clips

List order: Type - Manufacturer - Replacement OE Number



VW		
H 12 - L 15.9 - Ø 9.8mm		
Replacement OE	Pack Qty	Part No.
191853585A	50pc	36448

VW		
H 21.8 - L 26 - Ø 9.0mm		
Replacement OE	Pack Qty	Part No.
5X0867299	50pc	36451

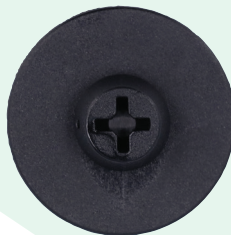
VW		
H 17.3 - L 34.1 - Ø 6.6mm		
Replacement OE	Pack Qty	Part No.
6Q0807643	50pc	36454



VW		
H 18.7 - L 21.4 - Ø 9.6mm		
Replacement OE	Pack Qty	Part No.
8Z0868243	50pc	36461

Ford		
H 19.7 - L 10.2 - Ø 7.7mm		
Replacement OE	Pack Qty	Part No.
91501S04003 & W711712	50pc	36478

Skoda		
H 9.9 - L 10.8 - Ø 5.0mm		
Replacement OE	Pack Qty	Part No.
N90536901	50pc	36467



Ford		
H 17.54 - L 22.75 - Ø 6.5mm		
Replacement OE	Pack Qty	Part No.
W705848S300	50pc	36483

VW		
H 12.4 - L 24.3 - Ø 9.2mm		
Replacement OE	Pack Qty	Part No.
3D0864812AB41	50pc	36455

VW		
H 19.8 - L 11.6 - Ø 5.8mm		
Replacement OE	Pack Qty	Part No.
701867299E9B9	50pc	36459



Ford		
H 12.9 - L 21 - Ø 9.5mm		
Replacement OE	Pack Qty	Part No.
6549354	50pc	36480

Ford		
H 13.36 - L 17.29 - Ø 9.31mm		
Replacement OE	Pack Qty	Part No.
6659902	50pc	36485

Renault		
H 30 - L 13.9 - Ø 3.3mm		
Replacement OE	Pack Qty	Part No.
770308105	25pc	36476

List order: Type - Manufacturer - Replacement OE Number

Push Rivets, Screw Rivets & Trim Locking Nuts

Trim Clips

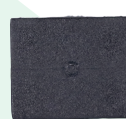
connect®
Workshop Consumables



Renault		
H 15.5 - L 16.5 - Ø 8.2mm		
Replacement OE	Pack Qty	Part No.
7703081184	50pc	36474

Skoda		
H 9.8 x 7.6 - L 9.8 - Ø 5.3mm		
Replacement OE	Pack Qty	Part No.
171853615A	50pc	36464

Skoda		
H 14.4 - L 17.7 - Ø 3.3mm		
Replacement OE	Pack Qty	Part No.
N10318001	50pc	36470



VW		
H 16 - L 25 - Ø 8mm		
Replacement OE	Pack Qty	Part No.
357868143	50pc	36453

VW		
H 15.8 - L 16.4 - Ø 6.8mm		
Replacement OE	Pack Qty	Part No.
3C0853586	50pc	36458

VW		
H 16.2 x 13.9 - L 20.7 - Ø 6mm		
Replacement OE	Pack Qty	Part No.
6Q0853147	50pc	36456



VW		
H 30 - L 11.2 - Ø 4mm		
Replacement OE	Pack Qty	Part No.
WHT000713	50pc	36463

VW		
H 22.0 - L 10.5 - Ø 5.0mm		
Replacement OE	Pack Qty	Part No.
WHT003207	50pc	36484

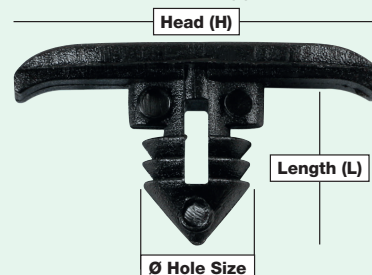
Skoda		
H 12.6 x 5.1 - L 8.7 - Ø 4.9mm		
Replacement OE	Pack Qty	Part No.
1Z0837732	50pc	36468



VW		
H 12.6 x 5.2 - L 9.3 - Ø 4.5mm		
Replacement OE	Pack Qty	Part No.
1Z0837732A	50pc	36452

VW		
H 10.2 x 8 - L 14.5 - Ø 5.2mm		
Replacement OE	Pack Qty	Part No.
3C0837975	50pc	36462

KEY:
Washer Flange (WF)
Width (W)
Diameter (D)
Internal Diameter (ID)
Flange Width (FW)
Thickness (T)



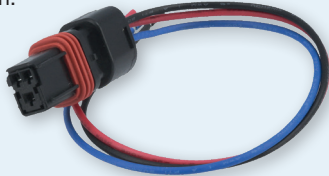
List order: Type - Manufacturer - Replacement OE Number

Trim Locking Nuts & Weatherstrip Clips

Renault Electrical 37578 Temperature Sensor Connector - 2pc

Suits Clio, Kangoo, Laguna, Megane, Sandero, Scenic, Twingo & Logan. Also compatible with Fiat, Skoda & Dacia.

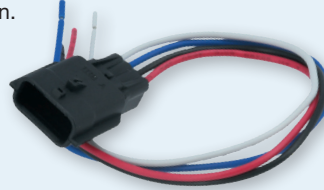
- Replaces OE No. 010201010000349
- 3 pin.



Renault Electrical 37579 Oxygen Sensor Connector - 2pc

Suits Clio, Kangoo, Laguna, Logan, Modus, Symbol & Twingo. Also compatible with Dacia.

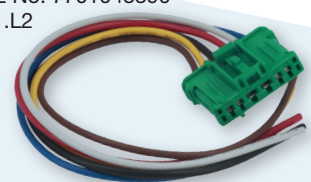
- To be used with OE No. 820063220
- 4 pin.



Renault Electrical 37580 Heater Resistor Connector - 2pc

Suits Clio, Megane, Modus, Scenic, Twingo. Also compatible with Citroën, Peugeot & Nissan. Compatible with OE No. 7701207718, F657165W, F657165M

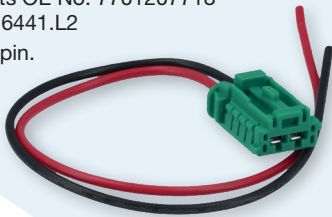
- Fits OE No. 7701048390 & 6441.L2
- 6 pin.



Renault Electrical 37581 Heater Resistor Connector - 2pc

Connector suits Clio, Megane, Modus, Scenic, Twingo. Also compatible with Citroën, Peugeot & Nissan.

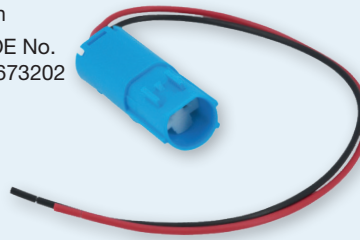
- Fits OE No. 7701207718 & 6441.L2
- 2 pin.



Renault Electrical 37582 Crankshaft Sensor Connector - 2pc

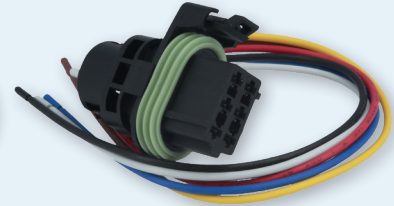
Suits Clio, Fluence, Kangoo, Laguna, Megane, Modus, Sandero, Scenic, Symbol, Twingo & Wind. Also compatible with Dacia & Nissan

- Fits OE No. 8200673202
- 2 pin.



Renault Electrical 37583 Fuel Pump Connector - 2pc

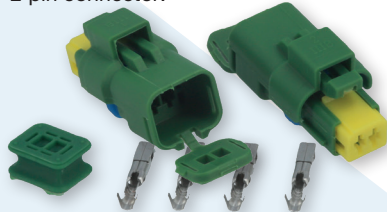
- Fits OE No. 7700253265
- 6 pin.



Citroën | Peugeot 37584 Temperature Sensor Connector - 6pc

Suits Peugeot - 206, 306, 307, 406, 607, 806, Expert, Expert Tepee, Citroën - Berlingo, C5, Xantia, Xsara, Xsara Picasso

- Equivalent to OE No. 6541S9
- 2 pin connector.



Citroën | Peugeot 37586 Electrical Ignition Coil Connector - 18pc

- 4 pin connector
- With 8 terminals & 8 seals.



Non-insulated Female 37585 Terminals - 100pc

- To suit Peugeot electrical connector sensors
- Overall length 20.38mm x width 3.51mm.



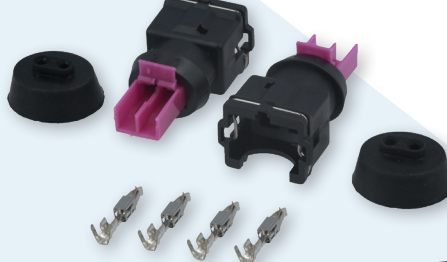
Citroën | Peugeot 37587 Electrical Fog Lamp Connector - 10pc

- 2 pin connector.
- With 4 terminals & 4 seals.



Citroën | Peugeot 37588 Electrical Fuel Injector Connector - 8pc

- 2 pin connector.
- With 4 terminals & 2 rubber caps.



Citroën | Peugeot 37589 Electrical Map Sensor Connector - 10pc

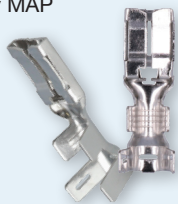
- Equivalent to OE No. 1544317-1 & OE No. 1544678-2
- 2 pin connector.
- With 4 terminals & 4 seals.



Non-insulated Female 37590 Terminals - 50pc

To suit Peugeot & Citroën electrical connector sensors.

- Used on heavy duty MAP sensor connectors.
- Overall length 30.56mm x width 9.38mm.



Weather Seal to suit 37591 Replacement Sensor Kits - 50pc

Used on Peugeot & Citroën sensors.



Citroën | Peugeot 37592 Multipurpose 2 Pin Connector - 6pc

Application: temperature, air flow, camshaft, oxygen & headlight sensor.

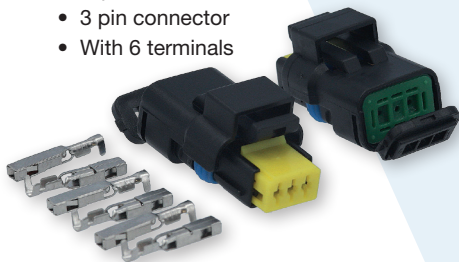
- Equivalent to OE No. 211PC022S0049
- 2 pin connector
- 4 terminals



Citroën | Peugeot 37593 Multipurpose 3 Pin Connector - 8pc

Application: temperature, air flow, camshaft, oxygen & headlight sensor.

- Equivalent to OE No. 211PC032S0049
- 3 pin connector
- With 6 terminals



Citroën | Peugeot 37594 Multipurpose 4 Pin Connector - 10pc

Application: fuel pump, headlight, accelerator pedal sensor.

- Equivalent to OE No. 211PC042S4021
- 4 pin connector
- With 8 terminals



Citroën | Peugeot 37595 Multipurpose 6 Pin Connector - 14pc

Application: fuel pump, throttle position & headlight sensor.

- Equivalent to OE No. 211PC069S0049
- 6 pin connector
- With 8 terminals & 4 terminals



Non-insulated Female 37596 Terminals - 100pc

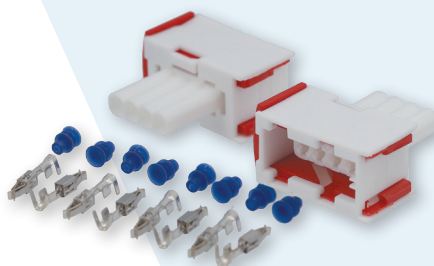
To suit Peugeot & Citroën electrical connector

- Overall length 20.19mm x width 3.52mm



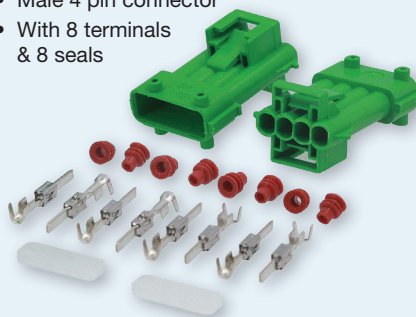
Peugeot Electrical 37597 Oxygen Sensor Connector - 18pc

- Equivalent to OE No. 144998-5
- Female 4 pin connector
- With 8 terminals & 8 seals



Peugeot Electrical 37598 Oxygen Sensor Connector - 18pc

- Replaces OE No. 185001-3
- Male 4 pin connector
- With 8 terminals & 8 seals



Peugeot Electrical 37599 Air Pressure Sensor Connector - 18pc

- 4 pin connector
- With 8 terminals & 8 seals



Non-insulated Female 37600 Terminals - 100pc

Female terminals to fit Peugeot & Citroën electrical connector.

- Overall length 18.61mm x width 2.88mm



Volvo Electrical 37601 Multipurpose 2 Pin Connector - 10pc

Application: coolant temperature sensor, ABS sensor.

- Equivalent to OE No. 7282-5548-30
- Male 2 pin connector
- With 4 terminals & 4 seals



Non-insulated Male Terminals - 100pc 37602

Male terminals to fit Volvo electrical connector.

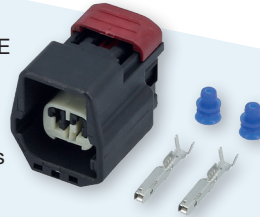
- Overall length 27.44mm x width 2.55mm x pin width 1.62mm



Volvo Electrical Multipurpose 2 Pin Connector - 10pc 37603

Application: coolant temperature sensor, ABS sensor.

- Equivalent to OE No. 9168792
- Female 2 pin connector
- With 4 terminals & 4 seals



Non-insulated Female Terminals - 100pc 37604

Female terminals to fit Volvo electrical connector.

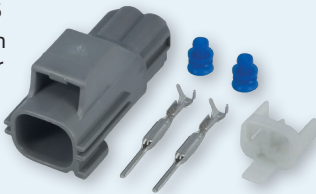
- Overall length 20.18mm x width 2.70mm



Volvo Electrical Multipurpose 2 Pin Connector - 10pc 37605

Application: ignition sensor, ETC sensor, coolant sensor.

- Connector to fit coolant sensor OE No. 30741155
- Male 2 pin connector
- With 4 terminals & 4 seals



Volvo Electrical Multipurpose 2 Pin Connector - 10pc 37606

Application: ignition sensor, ETC sensor, coolant level sensor.

- Connector to fit coolant sensor OE No. 30741155
- Female 2 pin connector
- With 4 terminals & 4 seals



Volvo Electrical Camshaft Sensor Connector - 14pc 37607

Connector to fit OE No. 9202134 sensor.

- Male 3 pin connector
- With 6 terminals & 6 seals



Volvo Electrical Camshaft Sensor Connector - 14pc 37608

Connector to fit OE No. 9202134 sensor.

- Female 3 pin connector
- With 6 terminals & 6 seals



Volvo Electrical Fuel Pressure Connector - 18pc 37609

Equivalent to OE No. 9456341.

- Female 4 pin connector
- With 8 terminals & 8 seals



Volvo Electrical Multipurpose Socket Housing - 10pc 37610

Equivalent to OE No. 9144275.

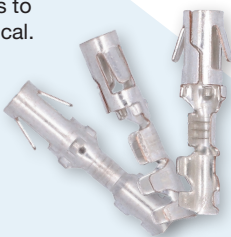
- Female 2 pin connector
- With 4 terminals & 4 seals



Non-insulated Female Terminals - 50pc 37611

Female terminals to suit Volvo electrical connector.

Overall length 20.75mm x width 3.73mm



Volvo Electrical Headlight H7 Bulb Connector - 6pc 37612

Used on S40, V40, S70, V70, S80, S60.

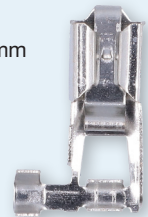
- H7 (499/477) bulb 2 pin connector to fit OE No. PMB350415
- 4 terminals



Non-insulated Female Terminals - 50pc 37613

Female terminals to fit Volvo electrical connector.

- Overall length 19.97mm x width 7.07mm of terminal jaws.
- Right angled terminal.



Volvo Electrical Air Flow Sensor Connector - 14pc 37614

To be used on MAS air flow meter OE No. 5WK96133Z, 8ET009142381, 5WK96133.

- 3 pin connector
- 6 terminals & 6 seals



Volvo Electric Power Steering Pump Connector - 10pc 37615

Replacement plug which suits complete harness OE No. 5N513K514AD. 3 pin connector

- With 8 terminals



Universal Standard CV Boot Kit

37660

Cut to size, stretch fit CV boot. Universal fitting.

- Fits shaft: \varnothing 18-26mm, joint: \varnothing 56-116mm, length: 58-128mm.
- Includes: CV boot, grease sachet, small & large CV boot clips.



Universal Large CV Boot Kit

37661

Cut to size CV boot. Universal fitting. Fits some cars, 4x4s & LCVs.

- Fits shaft: \varnothing 27-37mm, joint: \varnothing 78-130mm, length: 81-152mm.
- Includes: CV boot, grease sachet, small & large CV boot clips.



Our replacement boots are resistant to: oil & grease, grit, abrasion, extremes of temperature and tear & impact damage.

Universal CV Boot Kit (Split)

37662

Designed to be fitted without the need to dismantle any part of the suspension or driveshaft.

- Fits shaft: \varnothing 18-34mm, joint: \varnothing 60-116mm, length: 58-128mm.
- Includes: CV boot, grease sachet, small & large CV boot clips, glue & gloves.



This boot is aimed more at the DIY mechanic and, as the name suggests, has a tongue and groove 'split' running it's full length. Once in position the 'split' joint is glued using the special rubber adhesive that is included in the kit, making a strong durable join.

Steering Rack Boot Kit

37663

Designed as a direct replacement for OE applications. Superior flexibility which minimises wear & tear.

- Fits rod: \varnothing 8-49mm, rack: \varnothing 24-52mm, length: 192 - 232mm.
- Includes: steering rack boot x 2, cable ties & fitting cone.



Using the specially designed fitting cone included in the kit, enables this stretchy boot to be fitted without the need to remove the ball joint. This eliminates the need to re-track the vehicle after installation saving both time and money.

Fuel Line 1 Way Connector - 5pc

34068

Common rail 1 way connector.

- Popular connector on Hyundai CRDI 1.1 & 1.4 engines & KIA CRDI 1.4 & 1.1 engines.
- Suits injector reference no. 0445110586, 0445110587, 0445110588, 0445110589, 338002A600, 338002A610, 338002A650.
- For Bosch Injectors.



Fuel Line 2 Way Connector - 5pc

34067

Common rail 2 way connector.

- Popular on the latest 1.6 Alfa Romeo 1.6 JTDM engines, Fiat 1.3 & 1.6 JTDM engines, Lancia 1.6 JTDM & 1.3 JTDM engines, Opel Combo 1.6D & Peugeot Bipper 1.3 HDI.
- Suits injector reference no. 0455110351, 0445110524, 0445110614, 0986435280, 1616320580, 54800156, 55246223, 55255406, 55260384.
- For Bosch Injectors.

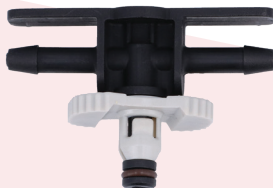


Fuel Line 2 Way Connector - 5pc

34069

Common rail 2 way connector.

- Popular connector on Hyundai CRDI 1.1 & 1.4 engines & KIA CRDI 1.4 & 1.1 engines.
- Suits injector reference no. 0445110586, 0445110587, 0445110588, 0445110589, 338002A600, 338002A610, 338002A650.
- For Bosch Injectors.



Fuel Line 1 Way Connector - 5pc

34071

Common rail 1 way 90 degree leak off connector.

- Popular on Dacia & Renault 1.5 DCI engines.
- Suits injector reference no. 0445010530, 0445010704, 0986437439, 0986437442.
- For Bosch injectors.



Fuel Line 2 Way Connector - 5pc

34073

Common rail 2 way leak off connector.

- Popular on PSA HDi engines.
- 2 way 90 degree leak off connector.
- For Bosch injectors.



Fuel Line Angled 1 Way Connector - 5pc

34075

Common rail angled 1 way leak off connectors.

- Popular on Seat Ibiza, Skoda Fabia, Skoda Roomster, Volkswagen Polo, Volkswagen Vento 1.2 TDI engines.
- Used on Delphi 28231462 & 03P130277 Piezo injectors.



Fuel Line 1 Way Connector - 5pc

34077

Common rail 1 way 90 degree snap type fuel connector.

- Popular on Fiat, Ford, Citroën & Peugeot.
- Used on Euro 6 engines.
- For Delphi injectors.



Fuel Line Offset 2 Way Connector - 5pc

34070

Common rail offset 2 way leak off connector.

- Popular on Dacia & Peugeot 1.5 DCI engines.
- Suits injector reference no. 0445010530, 0445010704, 0986437439, 0986437442.
- For Bosch injectors.



Fuel Line Offset 2 Way Connector - 5pc

34072

Common rail offset 2 way leak off connector.

- Popular on Peugeot 2.0 HDI engines.
- Mainly used on Peugeot Partner.
- For Bosch injectors.



Fuel Line 1 Way Connector - 5pc

34074

Common rail leak off 1 way leak off connector.

- Popular on Alfa Romeo 1.6 JTDM, 1.6 SDE, Citroën 1.3 HDI, Fiat 1.3 & 1.6 JTDM, Lancia 1.3 & 1.6 JTDM, Peugeot Bipper 1.3 HDi engines.
- Suits injector reference no. 0445110351, 0445110524, 0445110614, 0986435204, 0986435280, 161320580, 54800156, 55246223, 55255406, 55260384.
- For Bosch injectors.

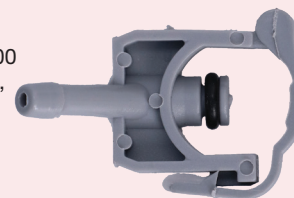


Fuel Line Heavy Duty 1 Way Connector - 5pc

34076

Common rail heavy duty leak off connector.

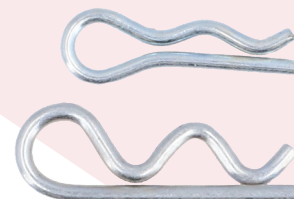
- Popular on Mercedes-Benz C 200 CDI engines. Engine types S211, W204, W211.
- Used on Delphi injectors A6460700987 & EJBR04201D.



Brake R Pin Retainers

Single coil high strength retainers to secure brake pads.

- Material - carbon steel.
- Strong, durable and corrosion resistant.
- Holds the brake pad retaining pin in place.



Size	Quantity	Part No.
Small	50pc	34175
Large	50pc	34176



Brake Bleed Screw M6 x 1 - 5pc

34184

- M6 x 1 (7 x 38.0)
- Applications: Audi, Seat, Skoda, Subaru, VW



Brake Bleed Screw M6 x 1 - 5pc

34191

- M6 x 1 (7 x 29.0)
- Applications: Audi, BMW, Fiat, Mercedes-Benz, Opel, Saab, Seat, VW



Brake Bleed Screw M7 x 1 - 5pc

34194

- M7 x 1 (7 x 21.7)
- Applications: Alfa Romeo, BMW, Citroën, Dacia, Daihatsu, Fiat, Ford, Hyundai, Isuzu, Mazda, Mercedes-Benz, Mitsubishi, Nissan, Opel, Peugeot, Renault, Rover, Seat, Skoda
- Talbot, Vauxhall, Volvo, VW



Brake Bleed Screw M7 x 1 - 5pc

34195

- M7 x 1 (7 x 26.2)
- Applications: Citroën, Fiat, Ford, Mercedes-Benz, Nissan, Opel, Peugeot, Renault, Suzuki, Volvo



Brake Bleed Screw M7 x 1 - 5pc

34196

- M7 x 1 (7 x 28.6)
- Applications: Alfa Romeo, Citroën, Fiat, Ford, Isuzu, Lancia, Mazda, Mitsubishi, Nissan, Peugeot, Renault, Rover, Seat, Skoda, Suzuki, Talbot, Toyota, Volvo



Brake Bleed Screw M7 x 1 - 5pc

34198

- M7 x 1 (7 x 30.5)
- Applications: Alfa Romeo, Audi, BMW, Citroën, Daihatsu, DAF, Fiat, Ford, Honda, Jaguar, Lancia, Land Rover, Mazda, Mercedes-Benz, Mitsubishi, Nissan, Opel, Peugeot, Renault, Rover, Saab, Seat, Subaru, Suzuki, Talbot, Toyota, Volvo, VW



Brake Bleed Screw M7 x 1 - 5pc

34199

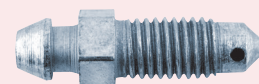
- M7 x 1 (7 x 38.3)
- Applications: Alfa Romeo, Audi, BMW, Citroën, Daihatsu, Ford, Mazda, Opel, Peugeot, Renault, Saab, Seat, Skoda, Subaru, Talbot, Toyota, Vauxhall, Volvo, VW.



Brake Bleed Screw M7 x 1 - 5pc

34200

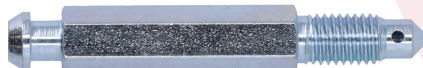
- M7 x 1 (9 x 33.0)
- Applications: Citroën, Daihatsu, Fiat, Mazda, Mercedes-Benz, Mitsubishi, Nissan, Opel, Peugeot, Renault, Saab, Subaru, Suzuki, Toyota, Vauxhall.



Brake Bleed Screw M7 x 1 - 5pc

34206

- M7 x 1 (8 x 55.5)
- Applications: Ford, Mitsubishi



Brake Bleed Screw M8 x 1 - 5pc

34201

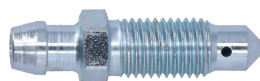
- M8 x 1 (8 x 32.0)
- Applications: Ford, Kia, Mazda



Brake Bleed Screw M8 x 1 - 5pc

34202

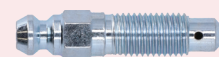
- M8 x 1 (9 x 33.5)
- Applications: Kia, Mazda, Mercedes-Benz, Mitsubishi, Opel, Saab, Suzuki



Brake Bleed Screw M8 x 1 - 5pc

34203

- M8 x 1 (8 x 28.0)
- Applications: Mazda

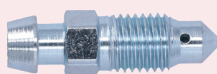




Brake Bleed Screw M8 x 1 - 5pc

34205

- M8 x 1.0 (8 x 28.0)
- Applications: Hyundai, Kia, Mazda, Mitsubishi, Suzuki



Brake Bleed Screw M8 x 1.25 - 5pc

34182

- M8 x 1.25 (9 x 41.5)
- Applications: Citroën, Fiat, Lancia, Mercedes-Benz, Opel, Peugeot, Seat, Skoda, Vauxhall, Volvo, VW



Brake Bleed Screw M8 x 1.25 - 5pc

34183

- M8 x 1.25 (9 x 35.5)
- Applications: Chevrolet, Chrysler, Citroën, Daewoo, Ford, Honda, Mercedes-Benz, Mini, Opel, Renault, Saab, Skoda, Suzuki, Vauxhall, Volvo



Brake Bleed Screw M8 x 1.25 - 5pc

34185

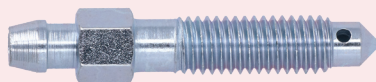
- M8 x 1.25 (9 x 32.5)
- Applications: Alfa Romeo, Audi, BMW, Chevrolet, Citroën, Fiat, Ford, Honda, Land Rover, Mazda, Mercedes-Benz, Mini, Nissan, Opel, Peugeot, Renault, Saab, Seat, Skoda, Toyota, Vauxhall, Volvo, VW



Brake Bleed Screw M8 x 1.25 - 5pc

34197

- M8 x 1.25 (9 x 49.0)
- Applications: Ford, Mercedes-Benz



Brake Bleed Screw M8 x 1.25 - 5pc

34204

- M8 x 1.25 (8 x 34.7)



Brake Bleed Screw M8 x 1.25 - 5pc

34207

- M8 x 1.25 (8 x 24.5)
- Applications: Alfa Romeo, Autobianchi, Citroën, Daewoo, Fiat, Lada, Lancia, Mazda, Mercedes-Benz, Mitsubishi, Nissan, Opel, Peugeot, Polmo, Renault, Rover, Saab, Seat, Talbot, Toyota, Vanden Plas, Vauxhall, Warburg, Zastava



Brake Bleed Screw M10 x 1 - 5pc

34186

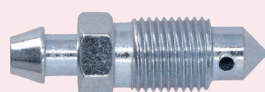
- M10 x 1 (10 x 31.6)
- Applications: Chevrolet, Hyundai, Kia



Brake Bleed Screw M10 x 1 - 5pc

34187

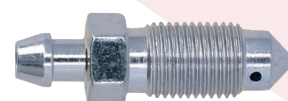
- M10 x 1 (10 x 34.0)
- Applications: Alfa Romeo, Audi, BMW, Chevrolet, Daewoo, Daihatsu, Ford, Honda, Hyundai, Isuzu, Kia, Lancia, Mazda, Mini, Mitsubishi, Nissan, Opel, Peugeot, Renault, Rover, Skoda, Subaru, Suzuki, Toyota, Vanden Plas, Vauxhall, Volvo, VW



Brake Bleed Screw M10 x 1 - 5pc

34188

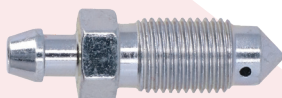
- M10 x 1 (10 x 36.5)
- Applications: Daihatsu, Ford, Iveco, Rover, Talbot (Simca), Toyota, Triumph





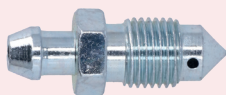
Brake Bleed Screw M10 x 1 - 5pc 34189

- M10 x 1 (11 x 36.0)
- Applications: Alfa Romeo, Audi, BMW, Chevrolet, Citroën, Daewoo, Fiat, Ford, Honda, Hyundai, Kia, Lancia, Landrover, Mazda, Mercedes-Benz, MG, Mitsubishi, Nissan, Opel, Peugeot, Seat, Skoda, Ssangyong, Subaru, Suzuki, Toyota, Volvo, VW



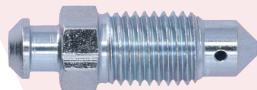
Brake Bleed Screw M10 x 1 - 5pc 34192

- M10 x 1 (11 x 29.0)
- Applications: Alfa Romeo, Audi, Austin, BMW, Chevrolet, Chrysler, Citroën, Daewoo, Daihatsu, Dodge, Fiat, Ford, Honda, Hyundai, Iveco, Jaguar, Kia, Land Rover, Mazda, Mercedes-Benz, Mitsubishi, Nissan, Opel, Peugeot, Renault, Rover, Saab, Seat, Skoda, Ssangyong, Subaru, Suzuki, Toyota, Vauxhall, Volvo, VW



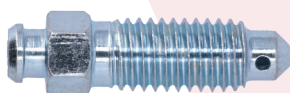
Brake Bleed Screw M10 x 1.25 - 5pc 34209

- M10 x 1.25 (10 x 33.0)
- Applications: Honda, Rover



Brake Bleed Screw M10 x 1.5 - 5pc 34216

- M10 x 1.5 (10 x 37.6)
- Applications: Chrysler, Ford, Hyundai, MG, Mitsubishi, Nissan, Rover, Sunbeam, Suzuki, Talbot, Vauxhall, Volvo



Brake Bleed Screw 1/4" x 28UNF - 5pc 34211

- 1/4" x 28UNF (7 x 28.5)
- Applications: Rover, Vauxhall



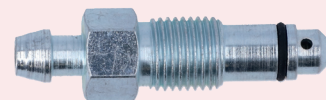
Brake Bleed Screw 3/8" x 24UNF - 5pc 34212

- 3/8" x 24UNF (10 x 31.0)
- Applications: Chrysler, Ford, Hyundai, MG, Mitsubishi, Nissan, Rover, Sunbeam, Suzuki, Talbot, Vauxhall, Volvo



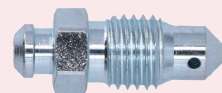
Brake Bleed Screw M10 x 1 - 5pc 34190

- M10 x 1 (11 x 41.8)
- Applications: Mercedes-Benz



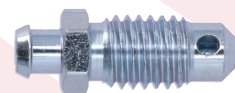
Brake Bleed Screw M10 x 1.25 - 5pc 34208

- M10 x 1.25 (10 x 28.0)
- Applications: Honda, Rover



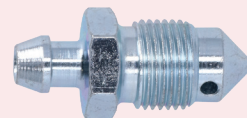
Brake Bleed Screw M10 x 1.5 - 5pc 34210

- M10 x 1.5 (10 x 29.5)
- Applications: Cadillac, Chevrolet, Chrysler, Ford, Opel, Pontiac



Brake Bleed Screw M12 x 1 - 5pc 34193

- M12 x 1 (13 x 31.4)
- Applications: Ford



Brake Bleed Screw 1/4" x 28UNF - 5pc 34214

- 1/4" x 28UNF (8 x 28.0)
- Applications: Iveco, Rover, Volvo



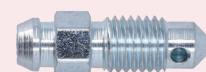
Brake Bleed Screw 3/8" x 24UNF - 5pc 34213

- 3/8" x 24UNF (10 x 36.7)
- Applications: Jaguar, Lotus, Morgan, Rover, Saab, Sunbeam, Talbot, Triumph, Vauxhall



Brake Bleed Screw 5/16" x 24UNF - 5pc 34215

- 5/16" x 24UNF (8 x 25.5)
- Applications: Hyundai, Kia



Professional Garage Workshop Wipes

Cleans off grease, oil, tar, silicone, paint & more.
Suitable for hands and surfaces. One sheet is enough for all.

- Lemon oil formula. Contains isopropyl alcohol.
- Made with olive oil, glucose derivatives, mineral oil, lanolin & moisturising lotion makes your hands clean, feel fresh and comfortable after use.



Lemon oil formula.
Refreshingly comfortable.

Description	Size	Part No.
Professional Garage Workshop Wipes - Pack 100	20.3cm x 20.3cm	35357
Professional Garage Workshop Wipes - Display Box 30 Sachets	241mm x 203mm	35362

Hand Sanitiser Gel

Instant hand sanitiser pump bottles.

- 75% alcohol which can kill 99.99% of most germs.
- REACH, FDA approved & TDS MSDS certified.



Perfect for trade counters & showrooms



Perfect for pockets, bags & glove boxes

Quantity	Size	Part No.
Supplied in a box of 12	100ml Bottles	35360
Supplied in a box of 36 bottles	280ml Bottles	35361

Professional Face Shield - Direct Splash Protection | 1pc 35369

Sturdy, lightweight & unbreakable.

- Adjustable visor which is vapor proof.
- Ultra light - 75g, including head strap.
- Made from cleanable PET material; thickness 30 microns.



Barrier Tape - Non-Adhesive

Ideal for cordoning off areas.

- Durable in all weathers.
- Total thickness 20 mic, elongation 240%, tensile strength 6 N/cm.
- Material: Polyethylene (PE) film.



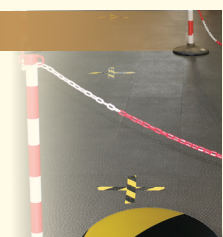
Colour	Size	Part No.
Black & Yellow	75mm x 500m	35364
Red & White	75mm x 500m	35365

SOLD INDIVIDUALLY

Barrier Tape - Adhesive

Ideal for marking out floors & walls.

- Good water & abrasion resistance.
- Material: PVC film coated with rubber pressure sensitive adhesive.
- Total thickness 0.15mm, elongation 150%, adhesive - rubber resin.



Colour	Size	Part No.
Black & Yellow	50mm x 33m	35366
Red & White	50mm x 33m	35367

SOLD INDIVIDUALLY

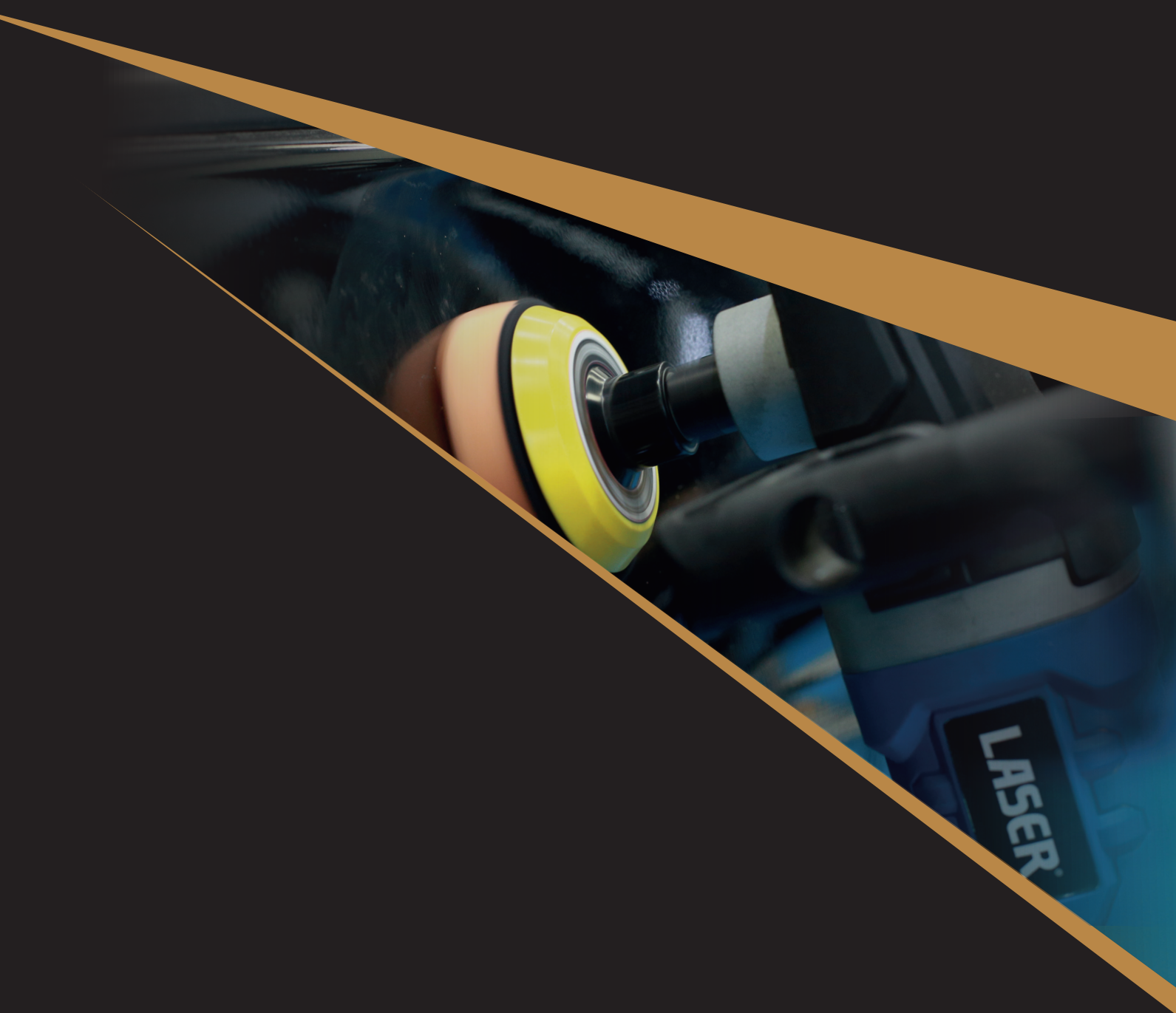
5-in-1 Disposable Interior Car Care Kit 35363

Contains:

- White steering wheel cover, LDPE, 10cm x 130cm x 20 microns.
- White gear lever cover, LDPE, 14cm x 14.5cm x 20 microns.
- White hand brake cover, LDPE, 9cm x 17cm x 20 microns.
- White car seat cover, LDPE, 130cm x 80cm x 13 microns.
- White floor mat, 100gsm with 13gsm PE film, 38cm x 50cm.



SUPPLIED IN BOXES OF 50 KITS



Dealer Stamp



The Tool Connection Limited cannot be held responsible in any way for personal injury caused whilst using these products or tools.
We reserve the right to change specifications at any time without prior notice. All images reproduced in this publication are for visual purposes only.

